

On the Move

Providing meals to the homebound in the State College area since 1971



Spring 2008 Newsletter

Meals on Wheels Third Annual Benefit Dinner

A Meal that Matters!

Thursday, May 1, 2008

Nittany Lion Inn Ballroom

Social Hour, 6:00 pm / Dinner, 7:00 pm

State College Meals on Wheels presents "A Meal that Matters," its 3rd annual benefit dinner on May 1, 2008. This event has quickly become a fixture in the community with a capacity crowd of over 300 expected to again fill the Nittany Lion Inn Ballroom. The fun-filled evening will feature prize giveaways and an exciting live auction, not to mention a great opportunity to socialize with friends and business associates.

This year, Meals on Wheels is fortunate to have **Coquese Washington**, head coach of the Penn State Lady Lions basketball team, as guest speaker. A former associate head coach at Notre Dame and star professional basketball player in the WNBA, Coach Washington is known for her energetic and inspirational leadership style. Exciting things are certainly in store for the future of the Penn State women's basketball program.

The live auction this year will again feature a beautiful Persian rug donated by the Desert Rug Company and an elegant piece of furniture donated by Capperella Furniture. The auction will also include exquisite jewelry, autographed items by Joe Paterno and Arnold Palmer, a hotel/ticket package for the PSU vs. Illinois football game donated by Shaner Corp, and more.

Twenty-five local organizations and individuals have again "stepped up the plate" as dinner sponsors. We are extremely grateful for the generous support these sponsors provide to Meals on Wheels and the homebound of our community. Without them, this fundraising event would not be possible.

A few tickets for the dinner are still available. Tickets are \$100 which includes a \$65 tax deductible donation. All proceeds benefit State College Meals on Wheels. To purchase tickets, call 861-1277. We look forward to an interesting and entertaining evening.



Coquese Washington

Thanks to our sponsors for stepping up to the plate

Affinity Connection
Brookline
Centre County Office of
Aging/RSVP
Diversified Asset Planners
Galen & Nancy Dreibelbis
First National Bank

Foxdale Village
Frost and Conn Insurance
Home Nursing Agency
Jersey Shore State Bank
Kris Clark
Lassie MacDonald and
Mary Lou Bennett/
ReMax Realty

McQuade, Blasko
Minitab, Inc.
Mount Nittany Medical
Center
Nestlerode and Loy, Inc.
Northwest Savings Bank
PennTerra Engineering
Restek Corporation

Sam's Club
SF & Company
Shaner Corp.
The International Order of
Odd Fellows
Wegmans Food Markets, Inc.
Wienken & Associates

2008 Empty Bowls

*Benefits Meals on Wheels
and the Food Bank*

presents the

Tarnished Six and Callanish

EMPTY CUP CONCERT

~ Mugs, Music & More ~

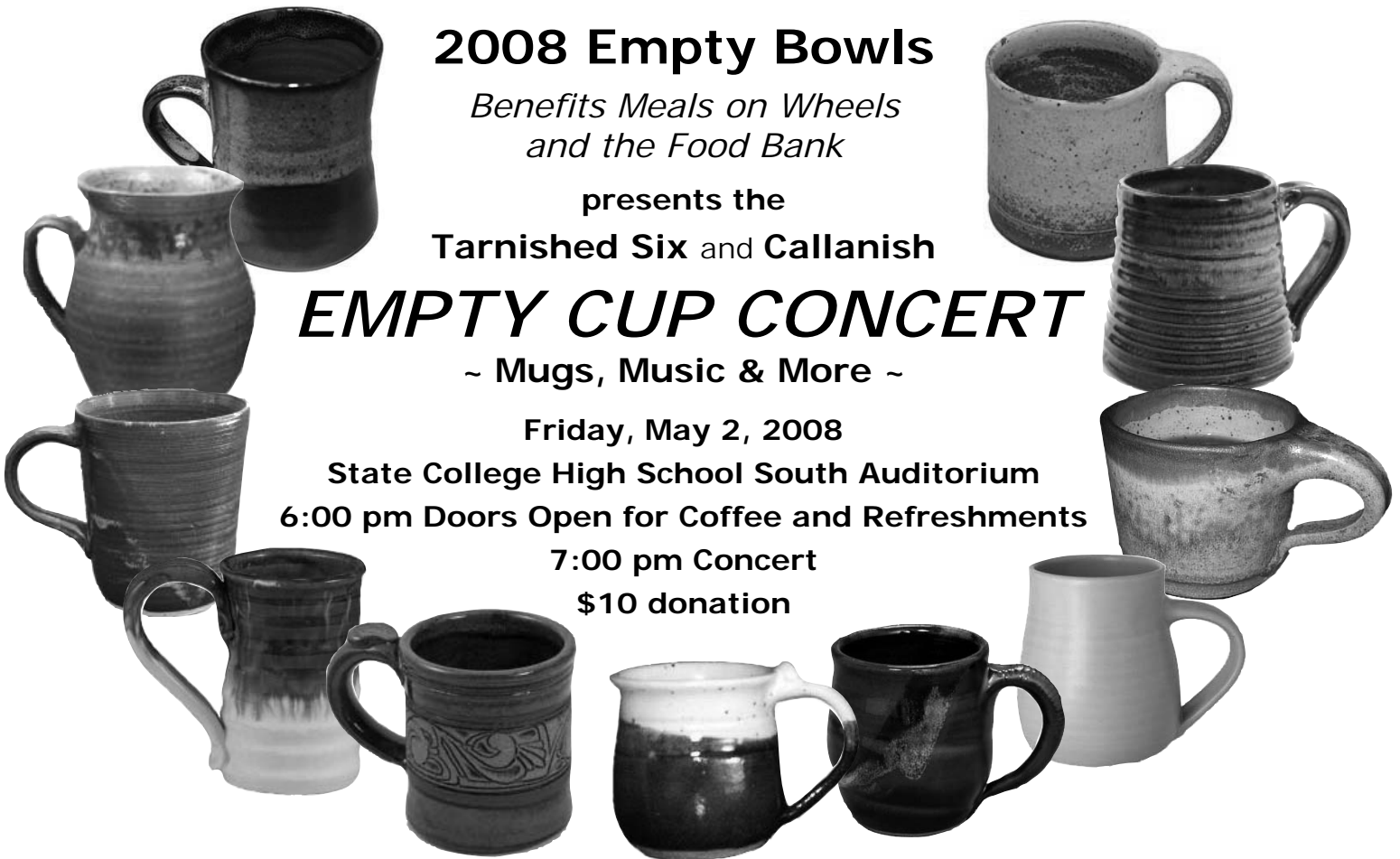
Friday, May 2, 2008

State College High School South Auditorium

6:00 pm Doors Open for Coffee and Refreshments

7:00 pm Concert

\$10 donation



Maneval Family Funds Provide Gift to Meals on Wheels Endowment

Meals on Wheels is very pleased to announce that The Maneval Family Funds of the Centre County Community Foundation has made a \$10,000 donation to the State College Meals on Wheels Fund, also at the Centre County Community Foundation (CCCF). This donation provides a significant boost to Meals on Wheels' fledgling endowment fund. The income generated from the endowment benefits Meals on Wheels in perpetuity. As the value of the endowment increases, income from the endowment also increases which will help meet the rising cost of operations. State College

Meals on Wheels is sincerely grateful for this extremely kind and generous gift.

David Maneval is a retired professor of mining engineering who taught at both Penn State and the University of Alaska. Dr. Maneval also served in state government for ten years and the federal government for seven. He returned to State College in 1992 where he currently resides.

If you would like to explore the possibility of a gift to the Meals on Wheels endowment fund, call CCCF at 237-6229 or view the CCCF website at www.centrecountycf.org.

BOARD of DIRECTORS

President

William Haner

Vice-President

Rose Martin

Treasurer

Lamartine Hood

Assistant Treasurer

Jeff Krantweiss

Secretary

Anne Dattilo

Corresponding Secretary

Pam Ferguson

Members At Large

Carolyn Andersen

Leslie Dutchcot

Robert Elliott

Cheryl Evans

Rodney Fletcher

Dee Frisque

Carlene Houser

Joyce Lee

Fran Levin

Susanne Marder

Eugene Oyler

Cindy Parsons

Robert Rayman

Peter Sorensen

James Winck

Executive Director

Anna Carol Buffington

printed by  **Print It**
plus

1821 West College Avenue, State College, PA

Meals on Wheels Appreciates the Opportunity to Rescue Food

MOW applauds the efforts and dedication of the thousands of students involved during this year's THON, the Penn State Dance Marathon event. Not only did this student-run philanthropy group raise record breaking funds and increase awareness for pediatric cancer, once the music stopped, they also provided a benefit for MOW clients.

Food items solicited by the THON Hospitality Committee were donated for the dancers by corporations, restaurants and stores. At the close of the February 24

weekend event when the dancers could eat no more and only rest, MOW volunteers were just getting started. MOW Volunteers were ready at the Bryce Jordan Center on the Penn State University campus to retrieve surplus healthy and tasty food items that could be incorporated as part of the menu for MOW clients. This year, specific MOW menu items from surplus THON foods included fruits, produce, snack foods, bottled water, and pastries that were provided to the 150 Meals on Wheels clients.

Throughout the year, MOW retrieves surplus food from a number of local groups and community events including the Rotary sandwich sales, Lions Club football concession stand, and food vendor shows at local hotels. Large quantities of food are also rescued from the Penn State dining facilities at semester close. MOW thanks these groups, and most recently THON, for allowing us the opportunity to rescue food. Landfill space is saved and more importantly people are fed.



Brad Updegrave, Penn State graduate student, helps with food rescue.



Glen Haney and Albert Jarrett pack a vehicle with rescued food.



Car packed with rescued food items.





State College Meals on Wheels
P.O. Box 1235
State College, PA 16804-1235

Non-Profit Org.
U.S. Postage
PAID
State College, PA
Permit No. 87



Lynn Shield and her children, **Betsy** and **Will**, deliver meals to clients on the Boalsburg route.



The **Cat's Meow Florist** provides a bouquet each month to say "You are Loved" to Meals on Wheels clients. **John Sepp** delivered a bouquet of white roses to **Mildred Anderson** on her 90th birthday. Happy Birthday, Millie!

To volunteer, call the Meals on Wheels office at (814) 237-8135, email acbuffington@yahoo.com, or cut off and mail this form to: State College MOW, P.O. Box 1235, State College, PA 16804

Name _____

Street/Box # _____

City _____

State _____ Zip: _____

Email _____

I would like to volunteer! Sign me up as a...

- Driver
- Visitor
- Kitchen Helper
- Food Rescue Volunteer

Thank you for your continued support. Together, we keep State College Area Meals on Wheels *ON THE MOVE!*

Notice of Registration: A copy of the official registration and financial information for State College Meals on Wheels may be obtained from the Pennsylvania Department of State by calling toll-free within Pennsylvania: 1-800-737-0999. Registration does not imply endorsement.